

---

Cable ID	Summary	Test Limit	Length	Headroom	Date / Time
256-NO NAME-UTP-CAT6-F2-120-01	PASS	TIA Cat 6 Perm. Link	90.4 m	7.8 dB (NEXT)	2023/06/19 16:22
256-NO NAME-UTP-CAT6-F2-120-02	PASS	TIA Cat 6 Perm. Link	90.0 m	5.5 dB (NEXT)	2023/06/19 16:27

Total Length:	180.4 m
Number of Reports:	2
Number of Passing Reports:	2
Number of Failing Reports:	0
Number of Warning Reports:	0
Documentation Only:	0



**Cable ID: 256-NO NAME-UTP-CAT6-F2-120-01**

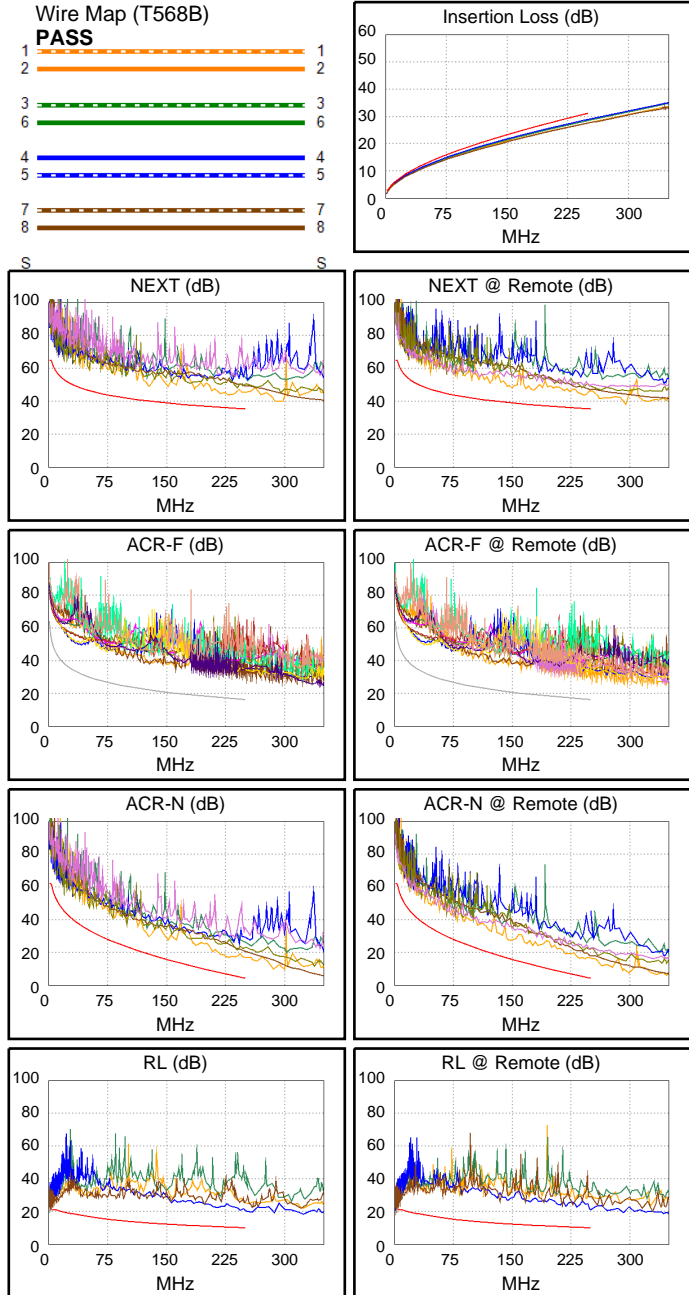
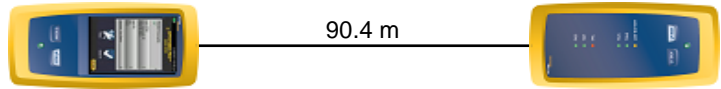
Test Limit: TIA Cat 6 Perm. Link  
Limits Version: V7.6  
Date / Time: 2023/06/19 16:22:41  
Operator: MARZBAN  
**Headroom 7.8 dB (NEXT 1,2-3,6)**  
Cable Type: Cat 6 U/UTP  
NVP: 69.0%

Main: Versiv  
S/N: 2968377  
Software Version: V6.6 Build 2  
Calibration Date: 2019/09/15  
Adapter: DSX-5000 (DSX-PLA004)  
S/N: 4647128

**Test Summary: PASS**

Remote: Versiv  
S/N: 2968378  
Software Version: V6.6 Build 2  
Calibration Date: 2019/09/15  
Adapter: DSX-5000R (DSX-PLA004)  
S/N: 4647127

Length (m), Limit 90.0	[Pair 7,8]	90.4
Prop. Delay (ns), Limit 498	[Pair 4,5]	453
Delay Skew (ns), Limit 44	[Pair 4,5]	16
Resistance (ohms)		N/A
Insertion Loss Margin (dB)	[Pair 4,5]	2.2
Frequency (MHz)	[Pair 4,5]	250.0
Limit (dB)	[Pair 4,5]	31.1



	Worst Case Margin		Worst Case Value	
<b>PASS</b>	MAIN	SR	MAIN	SR
Worst Pair	1,2-3,6	1,2-3,6	1,2-3,6	1,2-3,6
<b>NEXT (dB)</b>	7.8	8.0	7.8	8.0
Freq. (MHz)	228.5	236.5	228.5	236.5
Limit (dB)	36.0	35.7	36.0	35.7
Worst Pair	3,6	3,6	3,6	3,6
<b>PS NEXT (dB)</b>	9.4	8.5	9.7	8.5
Freq. (MHz)	231.5	241.0	240.5	241.0
Limit (dB)	33.3	33.0	33.0	33.0
<b>PASS</b>	MAIN	SR	MAIN	SR
Worst Pair	3,6-1,2	1,2-3,6	3,6-1,2	1,2-3,6
<b>ACR-F (dB)</b>	13.2	12.4	13.2	12.4
Freq. (MHz)	247.5	247.5	247.5	247.5
Limit (dB)	16.3	16.3	16.3	16.3
Worst Pair	1,2	3,6	1,2	3,6
<b>PS ACR-F (dB)</b>	14.9	15.2	15.1	15.2
Freq. (MHz)	245.0	247.5	250.0	247.5
Limit (dB)	13.4	13.3	13.2	13.3
<b>N/A</b>	MAIN	SR	MAIN	SR
Worst Pair	1,2-3,6	1,2-3,6	1,2-3,6	1,2-3,6
<b>ACR-N (dB)</b>	10.3	10.5	10.7	11.1
Freq. (MHz)	228.5	236.5	231.5	244.0
Limit (dB)	6.5	5.6	6.1	4.8
Worst Pair	3,6	3,6	3,6	3,6
<b>PS ACR-N (dB)</b>	12.0	11.2	13.0	11.8
Freq. (MHz)	232.0	241.5	249.5	250.0
Limit (dB)	3.5	2.5	1.7	1.6
<b>PASS</b>	MAIN	SR	MAIN	SR
Worst Pair	7,8	7,8	4,5	4,5
<b>RL (dB)</b>	3.9	3.8	10.7	10.9
Freq. (MHz)	3.9	3.9	244.0	250.0
Limit (dB)	21.0	21.0	10.1	10.0

Compliant Network Standards:  
 10BASE-T      100BASE-T4  
 1000BASE-T    2.5GBASE-T    5GBASE-T  
 ATM-25        ATM-51        ATM-155  
 100VG-AnyLan    TR-4        TR-16 Active  
 TR-16 Passive



**Cable ID: 256-NO NAME-UTP-CAT6-F2-120-02**

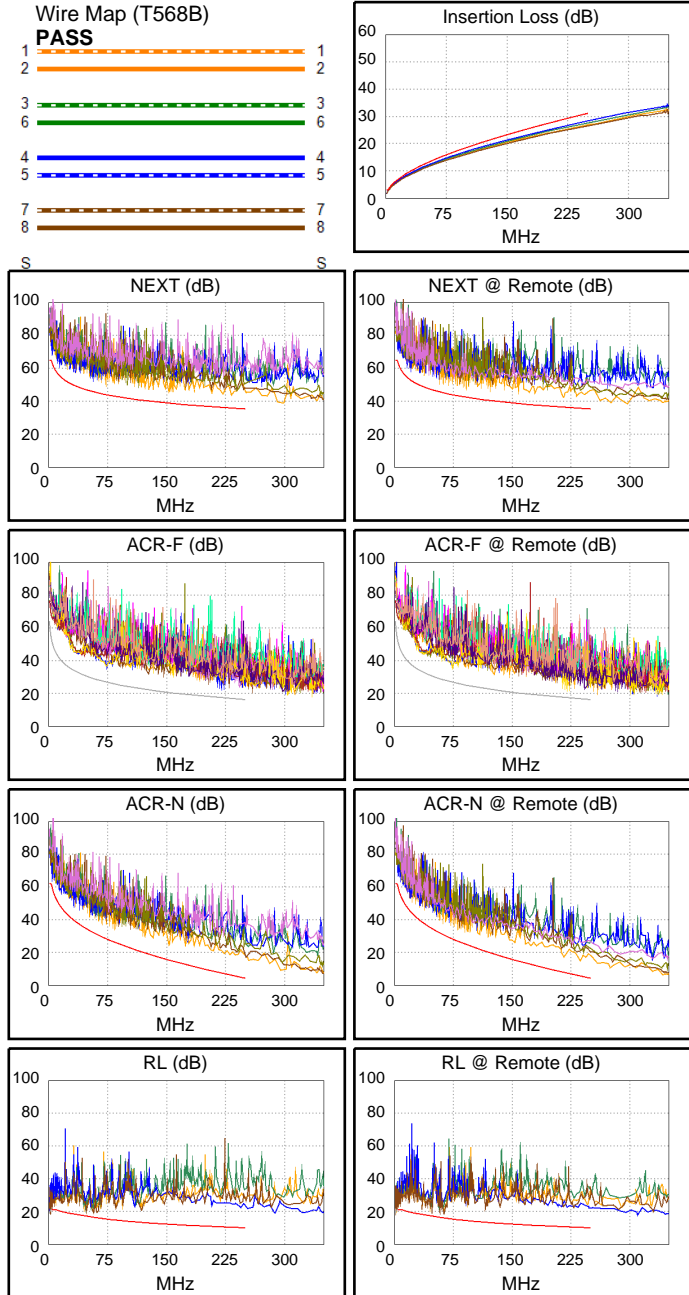
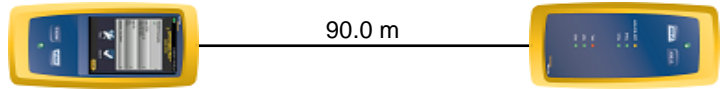
Test Limit: TIA Cat 6 Perm. Link  
Limits Version: V7.6  
Date / Time: 2023/06/19 16:27:37  
Operator: MARZBAN  
Headroom 5.5 dB (NEXT 1,2-3,6)  
Cable Type: Cat 6 U/UTP  
NVP: 69.0%

Main: Versiv  
S/N: 2968377  
Software Version: V6.6 Build 2  
Calibration Date: 2019/09/15  
Adapter: DSX-5000 (DSX-PLA004)  
S/N: 4647128

**Test Summary: PASS**

Remote: Versiv  
S/N: 2968378  
Software Version: V6.6 Build 2  
Calibration Date: 2019/09/15  
Adapter: DSX-5000R (DSX-PLA004)  
S/N: 4647127

Length (m), Limit 90.0	[Pair 7,8]	90.0
Prop. Delay (ns), Limit 498	[Pair 4,5]	452
Delay Skew (ns), Limit 44	[Pair 4,5]	17
Resistance (ohms)		N/A
Insertion Loss Margin (dB)	[Pair 4,5]	2.9
Frequency (MHz)	[Pair 4,5]	249.5
Limit (dB)	[Pair 4,5]	31.1



Worst Case Margin Worst Case Value

PASS	MAIN	SR	MAIN	SR
Worst Pair	1,2-7,8	1,2-3,6	1,2-3,6	1,2-3,6
<b>NEXT (dB)</b>	6.5	5.5	7.9	5.5
Freq. (MHz)	4.5	236.5	232.5	236.5
Limit (dB)	63.3	35.7	35.9	35.7
Worst Pair	1,2	3,6	3,6	3,6
<b>PS NEXT (dB)</b>	8.0	6.4	8.9	6.4
Freq. (MHz)	14.0	236.5	241.5	236.5
Limit (dB)	53.2	33.1	33.0	33.1

PASS	MAIN	SR	MAIN	SR
Worst Pair	1,2-7,8	7,8-3,6	3,6-7,8	7,8-3,6
<b>ACR-F (dB)</b>	6.7	5.9	7.2	5.9
Freq. (MHz)	220.5	243.0	243.0	243.0
Limit (dB)	17.3	16.5	16.5	16.5
Worst Pair	7,8	1,2	7,8	3,6
<b>PS ACR-F (dB)</b>	8.7	8.8	8.7	8.8
Freq. (MHz)	220.5	220.5	220.5	243.0
Limit (dB)	14.3	14.3	14.3	13.5

N/A	MAIN	SR	MAIN	SR
Worst Pair	1,2-7,8	1,2-7,8	1,2-3,6	1,2-3,6
<b>ACR-N (dB)</b>	7.1	8.1	11.3	8.7
Freq. (MHz)	4.5	4.4	233.0	236.5
Limit (dB)	59.5	59.8	6.0	5.6
Worst Pair	1,2	1,2	3,6	3,6
<b>PS ACR-N (dB)</b>	8.6	8.5	12.2	9.6
Freq. (MHz)	13.9	15.9	241.5	236.5
Limit (dB)	46.7	45.3	2.5	3.0

PASS	MAIN	SR	MAIN	SR
Worst Pair	7,8	7,8	7,8	7,8
<b>RL (dB)</b>	1.5	2.7	1.5	2.7
Freq. (MHz)	57.8	63.0	57.8	63.0
Limit (dB)	16.4	16.0	16.4	16.0

Compliant Network Standards:  
 10BASE-T      100BASE-TX      100BASE-T4  
 1000BASE-T    2.5GBASE-T      5GBASE-T  
 ATM-25        ATM-51            ATM-155  
 100VG-AnyLan    TR-4              TR-16 Active  
 TR-16 Passive